

St. Joseph's College of Education for Women

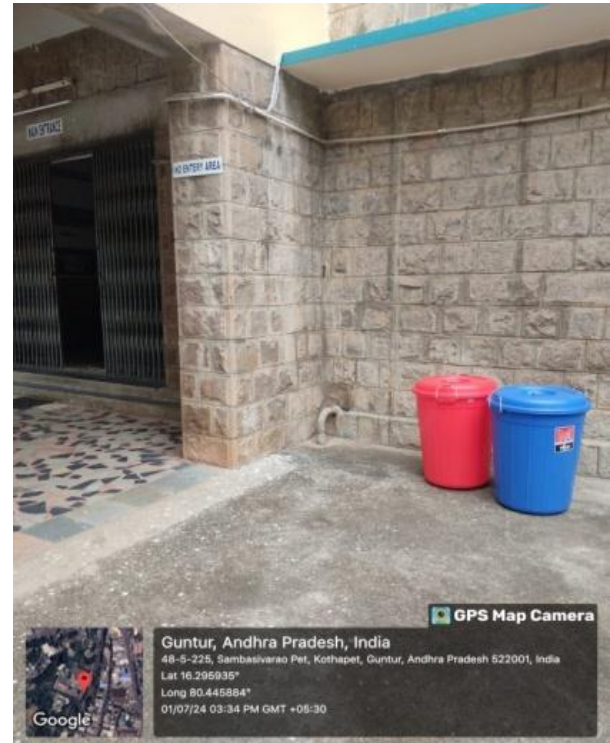
Opp. Sambasivapet 2nd Lane, Naaz Center, GUNTUR, A.P., INDIA.
(Under the Management of Society of Jesus Mary & Joseph)



7.1.3 Geo Tagged Photographs

Segregation of waste

In Order to maintain a clean environment in the SJCE campus, the policy of segregating the waste is followed well.



Provided separate dustbins for different types of wastes in the campus

Waste Collected by GMC/Dairy Farms

Separate dustbins in the institutional campus which are duly disposed off by the local municipality and dairy farms



Dry Waste Collected By Guntur Municipal Corporation A.P



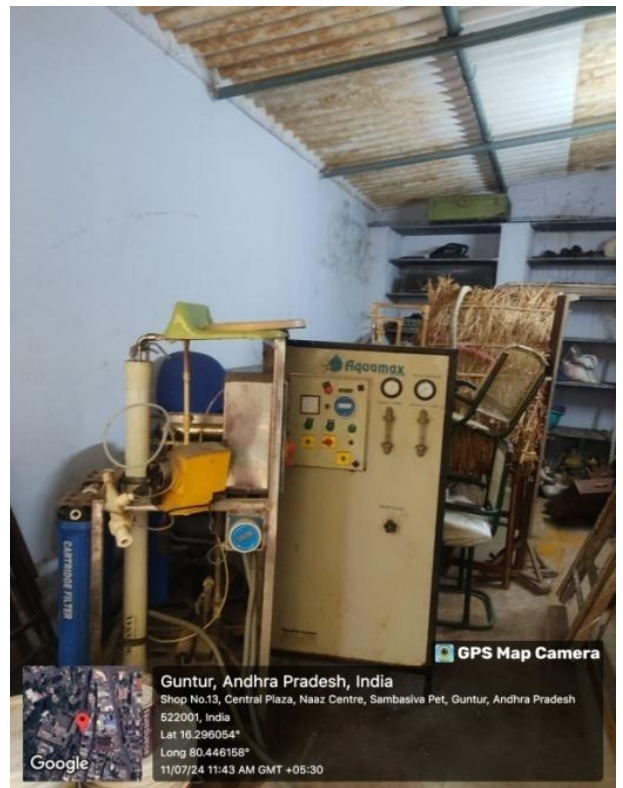
Wet waste collected by Gogineni Sambasiva Rao dairy farm

E-Waste Management

Collect Electronic waste such as old computers, phones, Cd and electronic appliances collected and it is send for recycling.



Collected E-waste handing over for recycling



E-waste Collected from Computer lab, office and handing over for recycling

Vermi Compost

Organic waste such as kitchen, canteen scrapes, garbage like vegetables peels, fruits, garden waste are sent it to compost pit. Nutrient, rich Compost can be used to enrich garden and potted plants.



Vermi Compost are used for Garden

Sewage Treatment Plant

A Sewage Treatment Plant (STP) is a facility made available to treat wastewater making it safe for discharge into the environment reuse.





GPS Map Camera

Guntur, Andhra Pradesh, India
48-5-225, Sambasivarao Pet, Kothapet, Guntur, Andhra Pradesh 522001, India
Lat 16.29604°
Long 80.445879°
04/07/24 11:40 AM GMT +05:30